
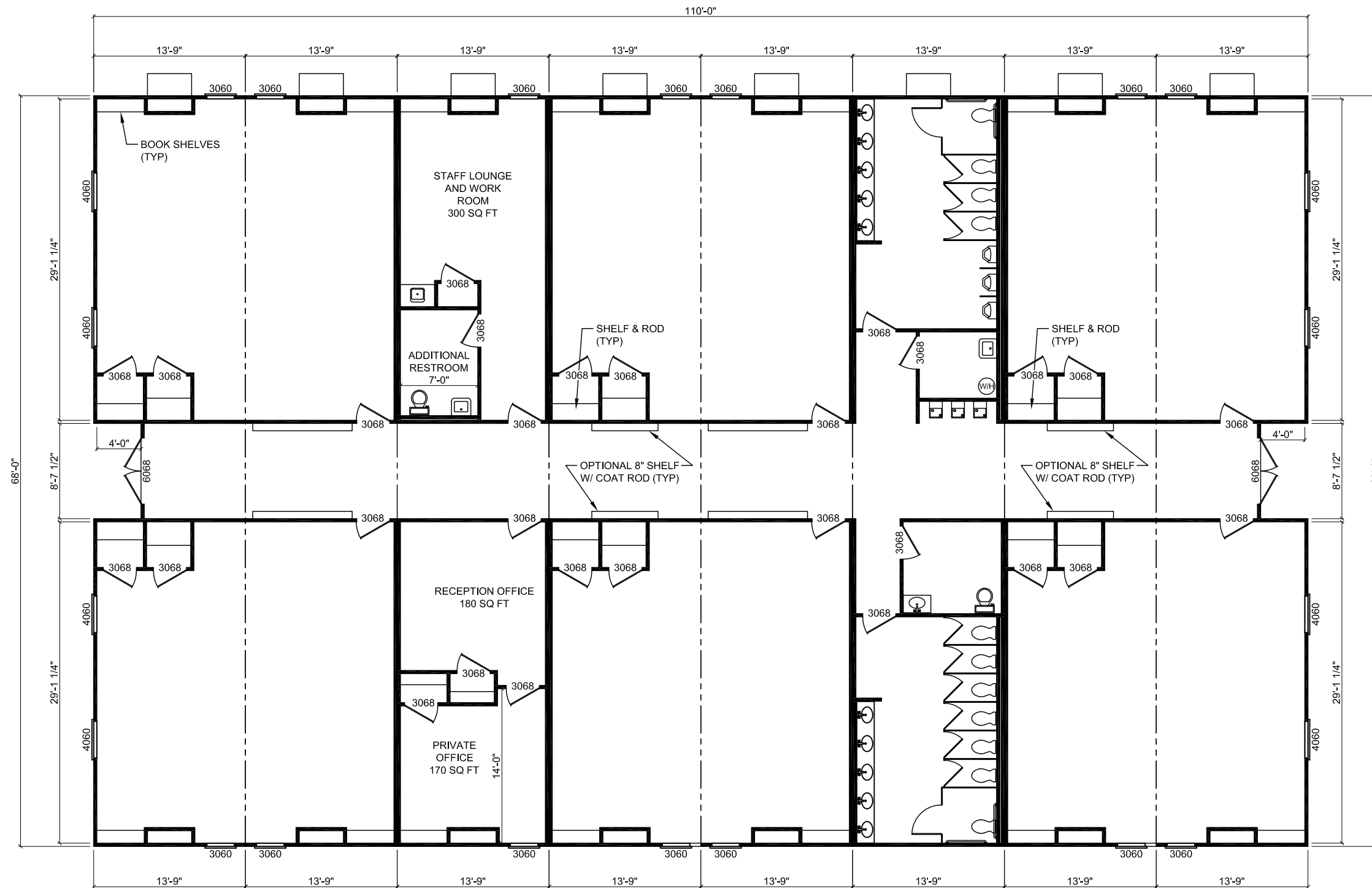


REVISIONS:	SCALE: 3/32" = 1'-0"	APPROVED BY:	 	TITLE: EDUCATION FLEXSPACE	JOB NO: USM042208-4 2008-04-22
	DATE:	DRAWN BY:		CONCEPTUAL MODULES	MODEL:

SIX CLASSROOM COMPLEX WITH OPTIONAL RESTROOM MODULE AND STAFF LOUNGE / OFFICES. THIS CONCEPT USING USMGE FLEXSPACE CAN BE EXPANDED TO INCLUDE AS MANY CLASSROOMS AND SUPPORT SERVICES AS NEEDED.



LH SIDEWALL MODULERH CTR MODULE LH OFFICE MODULE LH CTR MODULE RH CTR MODULE RESTROOM MODULE LH CTR MODULERH SIDEWALL MODULE

REVISIONS:	SCALE: 3/32" = 1'-0"	APPROVED BY:	 	TITLE: EDUCATION FLEX SPACE	JOB NO: USM062508-8
	DATE: 06-25-08	DRAWN BY: C. COOK		SIX CLASSROOM COMPLEX	MODEL: USMGE-110' x 68'

0106 2008-01-15